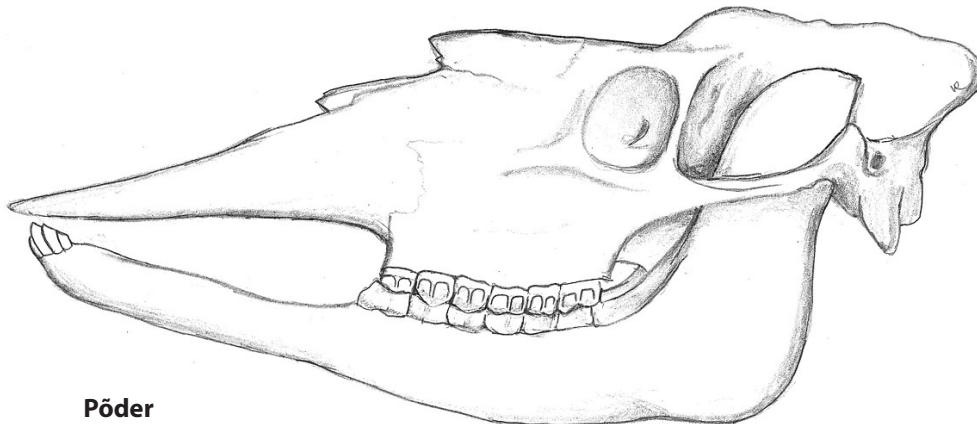


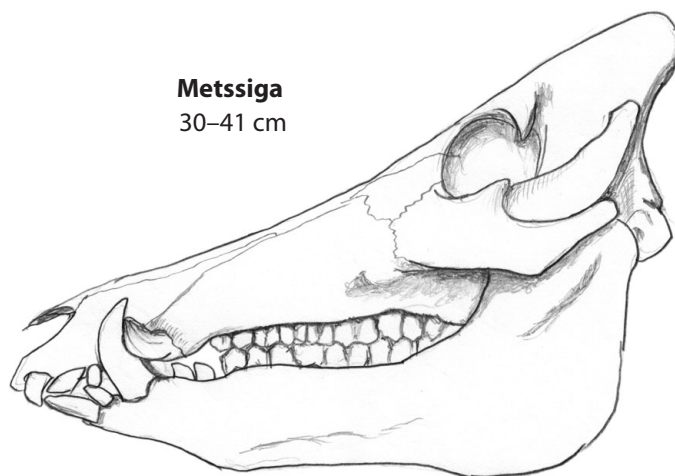
## 4. Eesti imetajate koljud. Piltmääraja



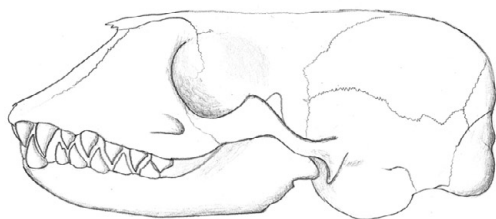
**Pöder**  
45–67 cm



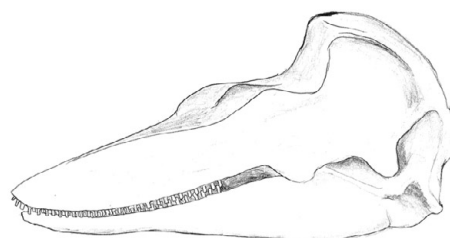
**Karu**  
28–41 cm



**Metssiga**  
30–41 cm



**Hallhüljes** 24–33 cm

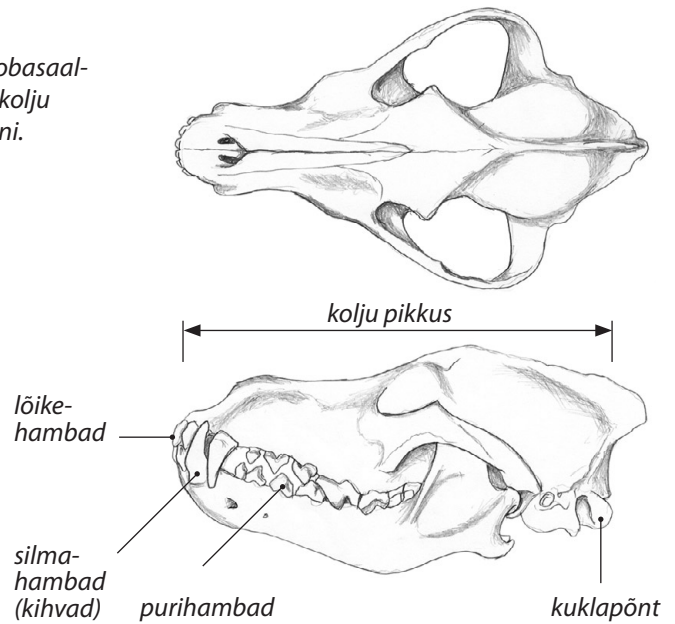


**Pringel** 20–30 cm

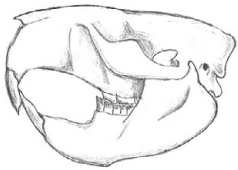
Kolju pikkust (kondülobasaal-  
pikkust) mõõdetakse kolju  
esiotsast kuklapõndani.



**Metskits**  
15–20 cm



**Hunt**  
21–29 cm



**Kobras**  
12–15 cm



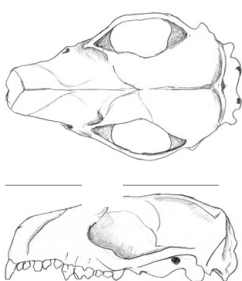
**Rebane**  
12–17 cm



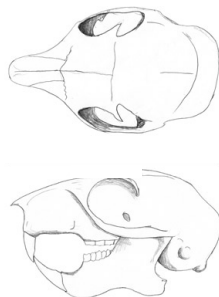
**Ilves**  
11–17 cm



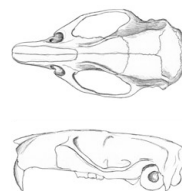
**Halljänes**  
8–9,6 cm



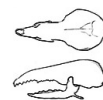
**Siil**  
5–6 cm



**Orav**  
4–5,5 cm



**Rändrott**  
3,8–5 cm



**Mets-karihiir**  
1,8–2 cm



**Põhja-nakhiir**  
1,4–1,6 cm